

# Inpute Capture Module

Capture, Process, Export - Simplicity is the key!

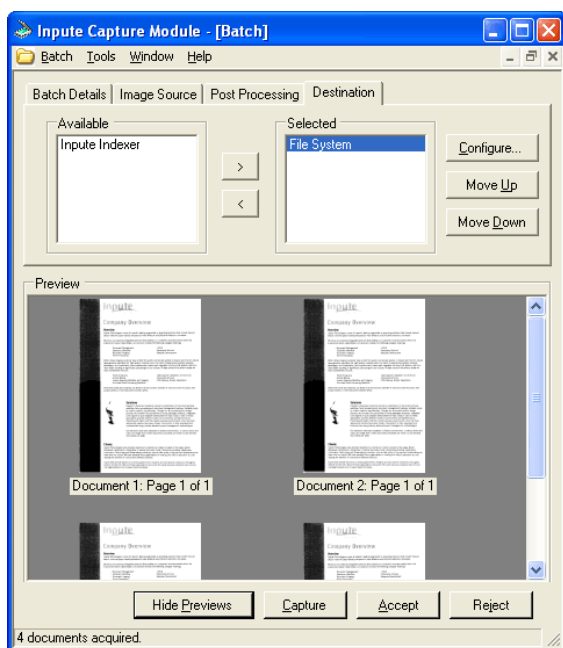
**The Inpute Capture Module allows organisations to quickly and easily capture and route documents to content management or document repository systems in a very efficient and cost effective manner.**

**Integrated information capture**, storage and retrieval solutions have been widely available for the past number of years. Currently few organisations would question the benefits of having highly accessible information in an efficient digital format. Converting information into this format however, can be a challenge, especially when one is faced with the myriad of software solutions currently available. Many products have unnecessary features not relevant to most organisations basic capture needs and many are difficult to use. Very few offer strength and stability when used in high volume batch environments whilst at the same time being flexible enough to operate either independently or tightly integrated with other core systems. What is necessary is a reliable, simple but extensible capture solution

**To address these requirements**, Inpute Technologies has launched the Inpute Capture Module, a simple easy to use capture module that is based on a highly extensible architecture. It meets the demands of both departmental and enterprise document capture requirements while also providing a high level of flexibility. Organisations can operate the module in independently or in a highly integrated fashion, tightly integrated with existing systems. Inpute are further able to provide client specific functionality through any one of the source, processing or export plug-ins.

## Features and Benefits:

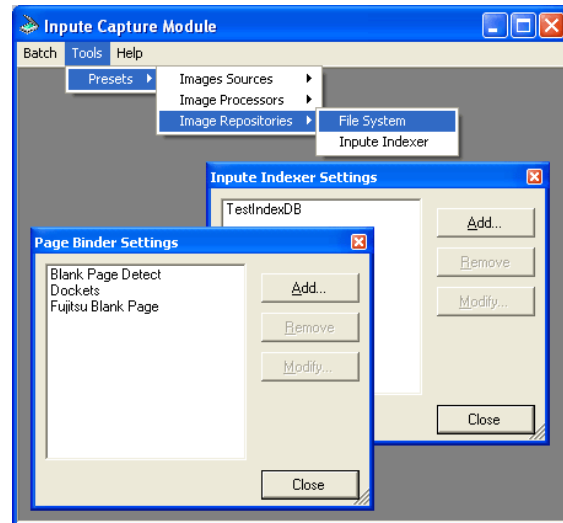
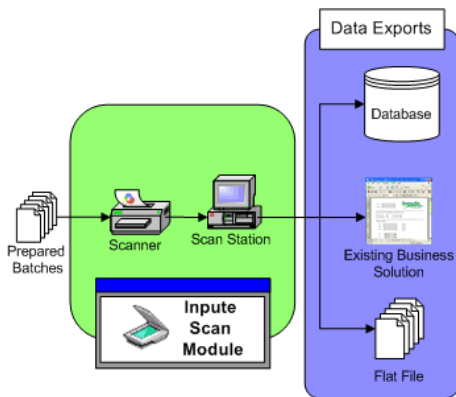
- Support for ISIS compatible devices. – **Industry standard interfaces means all production level scanners are supported**
- Preview of all scanned images including zoom functionality. – **Enhanced Quality control, all batches can be quickly checked for conformance to quality standards**
- Highly extensible imaging processor support – **Allows custom processing for page separation, image enhancement or any other required document processing or recognition to take place.**
- Support for various configurable simultaneous exports. – **Allows captured documents to be delivered to various business systems, Document Management, Document Archival, ERP, Workflow etc.**
- Powerful job and pre-set definition and management. – **Define commonly used configurations the first time and thereafter merely use the same definition, no additional configuration required!**



# Inpute Capture Module

## Developed by the Experts

The Inpute Capture Module is developed by a team that understands the needs of document capture users. The Inpute Capture Module combines Inpute Technologies' expertise in delivering document-imaging solutions with over 10 years development experience in this area.



## Hardware and Software Requirements:

- Windows 98 SE or Me, Windows NT SP6, Windows 2000 or Windows XP
- For 98 or Me: 32 MB minimum, 64 MB recommended
- For NT/2000/XP: 64 MB RAM minimum, 128 MB recommended
- Pentium II 300Mhz processor or higher recommended
- 100 MB free hard disc space for programs
- Sufficient free space for temporary files – recommended min 500 MB
- Suitable ISIS compatible scanner

## Inpute Technologies

Inpute Technologies is a company focused on developing and deploying world-class imaging and forms processing solutions for both the departmental and enterprise market place.

Part of the Softech Group, the company has been implementing solutions since 1992. Visit our web site today ([www.inpute.com](http://www.inpute.com)) for more detailed information on Inpute Technologies our latest product news.

Your local reseller is: